

## Dorset County Council: Enabling access to OS MasterMap®

Dorset County Council chose 1Spatial to assist with migration to AutoCAD® Map 3D. 1Spatial provided the Council's Corporate Property section with service-based expertise and tools to increase efficiency within the department with minimum disruption, whilst ensuring that when accessing the datasets, they are protected by appropriate security.

### The Challenge

Dorset County Council's Corporate Property Section manage property enquiries and assets across the county. Staff have been collecting digital data since 2002 and have thousands of records in proprietary format, but with limited access.

Like other Local Authorities, Dorset County Council traditionally used OS Land-Line® as their background mapping and wanted to migrate to OS MasterMap in advance of OS Land-Line being withdrawn.

One of the concerns expressed during the planning processes was that the migration centred around the fact that OS MasterMap data stored in Oracle typically leaves CAD and GIS users unable to access valuable enterprise datastores. This often leads to old datastores being used with the subsequent inefficiencies and duplication of resources as many users attempt to access two sets of data. More importantly, it can result in decisions being based on out-of-date information.

In order to link to the OS MasterMap database, 1Spatial were asked to establish the connection and methodologies between the AutoCAD Map 3D desktop client, OS MasterMap data and property data to ensure that information could be retrieved easily and efficiently. Critical to this was the fact that the Corporate Property Section needed a solution that involved minimal disruption to staff while the centralised update and management of OS MasterMap was configured.



### The Solution

1Spatial's solution comprises the connection of OS MasterMap and other departmental specific spatial and nonspatial datasets, using a single application. This application bridges the gap between CAD and GIS, enabling Dorset County Council's Corporate Property Section to access shared data from within a high precision CAD system, whilst simultaneously integrating other spatial data formats.

1Spatial configured the Council's existing data sets held in Oracle tables (OS MasterMap) and their SHP files, ensuring that no past investment was lost.

1Spatial recommended a multi-user configuration to create a time-saving solution with configured, secure and controlled access across the department using fast, direct Oracle connectivity for OS MasterMap and the Open Source Featured Data Object (FDO) component within AutoCAD Map 3D for their other datasets.



1Spatial Gazetteer for Address-Point in AutoCAD Map

## Training and Consultancy

Dorset County Council also used 1Spatial's consultancy skills to provide the following benefits:

- OS MasterMap stylisations to view data in a way that Dorset County Council's Corporate Property Section were familiar with
- A secure and robust connection to spatial and non-spatial files to reduce duplication
- Train staff to work in a high precision CAD environment using corporate spatial datasets making more effective use of their time

## Additional Tools

1Spatial created and installed the following toolset which allow traditional CAD users within Dorset County Council a consistent view of the same base mapping data within their own toolset without the need for re-training or Spatial database administrators (DBA) to alter the MasterMap repository

Schema set up tool – allows a CAD manager (without the need for a DBA) to browse an Oracle database and 'discover' the spatial schema and structure. This automatically creates a unique CAD-Compatible schema providing direct access and enabling two user interface (UI) tools to be implemented inside the CAD system.

Gazetteer Tool – this UI is implemented within AutoCAD Map and provides the user with a simple search tool which can be configured

onto the Ordnance Survey MasterMap data at any level, eg Address Layer, Topo Layer or onto any other layer in the corporate repository. This provides the user with a Gazetteer consistent with Corporate standards and integral to CAD.

Simplified Access Tool – this again provides an efficient 'one-click-map' within AutoCAD Map that can query and retrieve data from the corporate map database. Specifically this tool has been designed to be scalable across the whole organisation regardless of the number of CAD users accessing the system.

## The Results

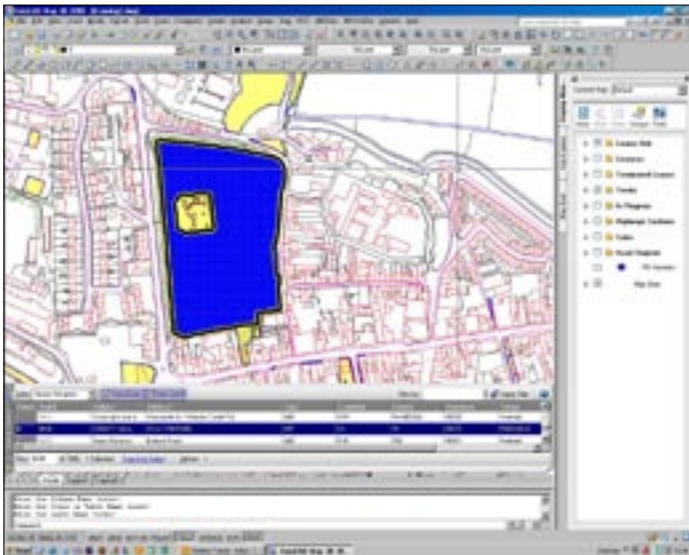
Dorset County Council's Corporate Property Section are now able to fulfil their business tasks more efficiently within one application and with excellent data quality. The 1Spatial extensions and consultancy enabled the departments operating an AutoCAD Map 3D environment to access the data they need within a few mouse clicks.

Ultimately, staff at the Council are now able to access information very quickly. For the management team the removal of duplication and the use of a

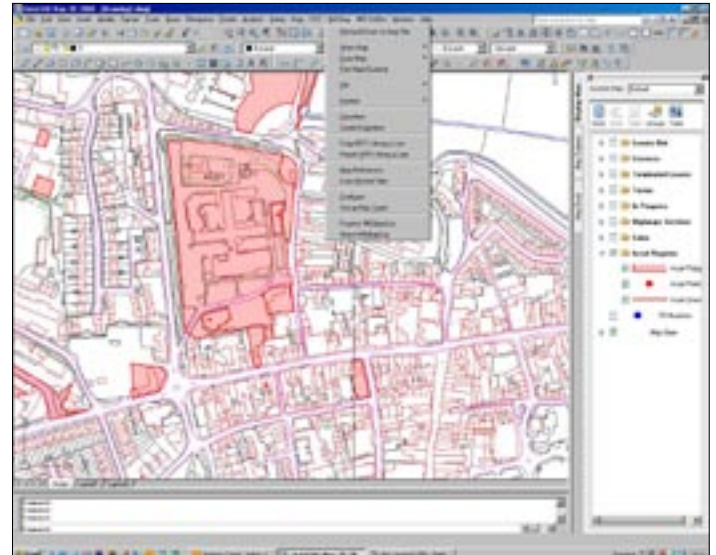
centralised OS MasterMap resource gives them confidence that the information they are using to make business decisions is as up-to-date as possible.

*"We are delighted with the solution and training received from 1Spatial. We are now able to use AutoCAD and GIS seamlessly, saving time and increasing productivity."*

**Andrew Turner**  
Property Database Manager  
Dorset County Council



MasterMap data and DCC polygon editing with integrated attribute data table



1Spatial MasterMap+ tool set for AutoCAD Map



## 1Spatial

### Head Office

Cavendish House  
Cambridge Business Park  
Cambridge  
CB4 0WZ  
UK

### International Offices

Rue de Colonies 11  
1000 Brussels  
Belgium

1 Nore House  
Riverview Business Park  
Mahon  
Cork  
Ireland

Olavsgt. 39b  
NO-3612  
Kongsberg  
Norway

3 Wellgreen Lane  
Stirling  
FK8 2BS  
UK