

## The Complete NG9-1-1 Solution for Wisconsin PSAPs

Take the pain out of NG9-1-1 preparation with support from experts at every stage of the process.

### What does the Pro-West and 1Spatial team offer?

The team of Pro-West & Associates and 1Spatial offers Wisconsin Counties and PSAPs a complete solution to address the pain points often experienced with NG9-1-1 data preparation and validation.

Huge challenges exist for many organizations in reaching NG9-1-1 compliance – challenges such as:

- Outdated data
- Data in disparate systems and formats
- Lack of familiarity with GIS technology
- Insufficient time

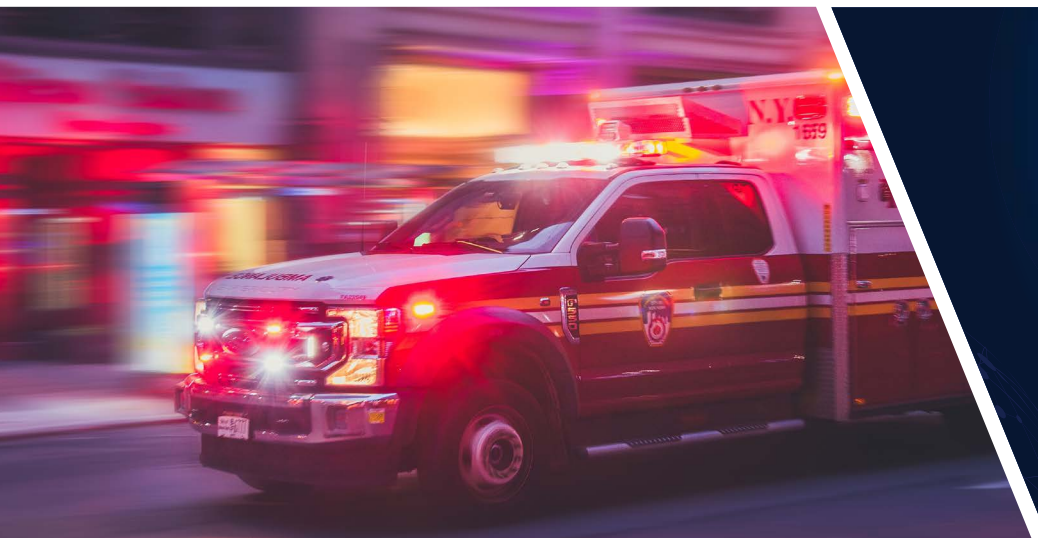
Reaching our ultimate goal - a nationwide system built for modern communications, reducing response times and increasing location accuracy – will require us to navigate those obstacles. That's where the team of Pro-West and 1Spatial can help.

From interpreting data reports to submitting data to the State of Wisconsin, our team is ready to help your organization prepare for NG9-1-1:

- Data analysis
- Schema standardization
- Remediation and QC of all data elements (GIS data, ALI, MSAG)
- Loading data to the 1Engage data portal
- Training on 1Engage
- Interpretation of reports on NG911 data compliance
- Data maintenance
- GIS solutions that leverage 911 data to share information and streamline workflows

### NG911 Services

- Deploy and maintain public safety NG911 enterprise solution
- Training for PSAPs, Counties, and COGs
- Data remediation
- Submit data on behalf of Counties and PSAPs
- Review validation reports
- Update and correct all NG911 data elements (GIS data, MSAG, ALI)



## Case Study (Racine County, WI)

Racine County, WI needed support as it began NG9-1-1 preparation. The County knew it would require data development, clean-up and analysis to achieve compliance, so sought help from its long-term GIS partner, Pro-West & Associates, to succeed.

The process included data development, analysis and clean-up and encompassed both the County and City of Racine:

1. County-wide address point creation
2. Road Centerline data standardization and cleanup
3. Review, comparison, and incorporation of MSAG and ALI data into GIS
4. Updates to MSAG and ALI databases via Intrado and AT&T

Pro-West configured a schema to conform to WLIA standards and ensured that attributes required for the federal NENA addressing standard were reviewed and incorporated into the schema. Pro-West then migrated the County's data to the new schema.

Pro-West performed data analysis and clean-up, encompassing the following stages and datasets. Errors were corrected by Pro-West or communicated to the County for feedback:

- 911 ALI database to Address Points
- 911 ALI database to Road Centerlines

- MSAG to Road Centerline Analysis
- Road Centerline Analysis
- Address Points Analysis
- ESN Analysis

Pro-West submitted the County's data to the State's NG911 data portal and reviewed any errors returned. Errors were either corrected in the GIS data, MSAG/ALI databases, or verified and marked as exceptions to the validation functions.

With data preparation complete, the County has achieved its goals for NG9-1-1 data preparation:

- Complete and accurate address point feature class
- Updated and standardized road centerline feature class
- Updated and standardized ESN Boundaries feature class
- Polygon layer representing the community names in the MSAG Community Boundary feature class
- Errors and inconsistencies within MSAG and ALI databases were updated and submitted for approval

To support ongoing needs, Racine County continued to work with Pro-West, implementing Esri GIS-based solutions to manage address data and requests.

## How can organizations benefit?

Organizations in Wisconsin benefit from a seamless and streamlined NG9-1-1 preparation process - a time-consuming workload for organizations and individuals whose time is already at maximum capacity. Our team will help you cross the finish line to NG9-1-1 compliance with the assurance of efficiency and accuracy, without the added workload.

Our team combines specialist knowledge, technical proficiency, and many years of experience providing the services needed to become NG9-1-1-compliant. We work with state governments to implement NG9-1-1 validation portals and with local governments in Wisconsin to analyze, compare and clean up their data to meet requirements. We develop data where it is missing, perform QA/QC, run validation checks, submit data to the State, using modern GIS tools and automated processes for efficiency. Our team can also provide ongoing maintenance, making sure your data remains NG9-1-1-compliant.

## About our team

**Pro-West & Associates:** Pro-West & Associates, an employee-owned business, was founded in 1987 and provides GIS services to local, state and federal government and commercial organizations. We have supported Wisconsin Counties with GIS services for 30+ years. Pro-West has completed over 40 NG911 implementations and has been supporting local governments with 911 services for 25 years. NG911 services include interpreting data reports, performing data analysis and clean-up to comply with NG9-1-1 standards, coordinating communication between local governments and other agencies, and providing technical support.



**1Spatial:** 1Spatial has 20 years' experience in automating GIS data validation and has performed seven statewide NG911 implementations since 2017. 1Spatial's 1Engage solution streamlines NG9-1-1 GIS data preparation using proven pre-configured and automated data validation and aggregation technology. 1Engage can be deployed either as a standalone Software-as-a-Service (SaaS) validation tool, a spatial interface, or integrated into an enterprise solution, ensuring optimal data interoperability.



### CONTACT

Brandon Crissinger, Pro-West & Associates  
[bcrissinger@prowestgis.com](mailto:bcrissinger@prowestgis.com) | (320) 207-6854

Tom Paulson, 1Spatial  
[tom.paulson@1spatial.com](mailto:tom.paulson@1spatial.com) | (630) 699-5517

