



Holland Board of Public Works accelerates their UN ArcGIS migration by leveraging 1Spatial's UN Readiness App and services.

“Thanks to 1Spatial, we achieved a successful UN migration in half the time. Traditional methods would have exceeded our project timeline.” Neil Besteman, GIS Specialist, Holland Board of Public Works

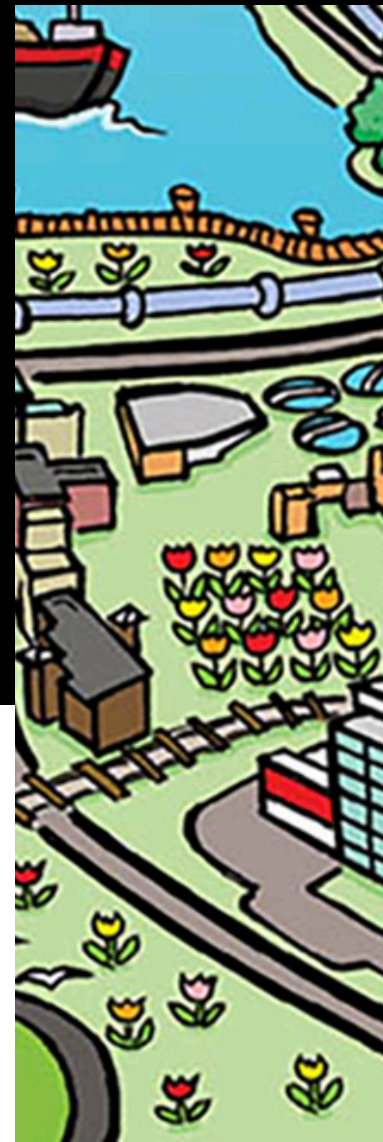


BUSINESS SNAPSHOT:

Holland Board of Public Works provides electricity to approximately 30,000 customers in Ottawa and Allegan County. Over 80% of the power is used by industrial clients and recently, a new substation was brought online to support a large LG battery facility. This has increased the demand of electricity capacity requirements by 40%.

The Mission

Holland BPW selected a new SCADA system to enhance the reliability and resilience of their electrical distribution operations. The new SCADA system required either the loading of legacy GIS networks or upgrading to a new GIS Utility Network (UN) model



GIS platform. Holland BPW opted for a solution with a lower total cost of ownership which involved both, upgrading and migrating the existing geometric GIS network to a new Utility Network GIS model.

The Challenge

The initial challenges Holland BPW faced were no one had experience doing a UN Migration and with limited team resources, the scope and effort weren't fully understood. There were unknowns that existed in the data quality as well as the utility network requirements, and if Holland BPW didn't meet their project timeline additional costs would be incurred.

After 3 - 4 months of using traditional UN migration methods for data discovery, schema mapping, editing, and loading the extracts into a UN model, it became clear this project would take longer than anticipated and the use of a third-party tool was necessary.

The Solution

CUSTOMER QUOTE:

“With 1Spatial’s UN migration apps and services in place, we sped up our workflows and easily resolved the UN non-conformities in our data.”

Neil Besteman, GIS Specialist
Holland Board of Public Works

After researching and evaluating different vendors, Holland BPW identified several benefits with 1Spatial’s UN Readiness and Validation Apps. When talking about this, the Holland BPW team

referred to these key reasons for selecting 1Spatial:

- User friendly and pre-built apps.
- Speed of data processing - the same day they logged in.
- Quick detection and pinpoint location of non-conformities.
- Improved communication and workflows.
- Simplified error classifications.

CUSTOMER QUOTE:

“With the support of 1Spatial’s UN migration apps and services, we completed a successful UN migration in under 100 business days.

Neil Besteman, GIS Specialist
Holland Board of Public Works

**See what it’s like to have a
UN ArcGIS migration partner.**

**Sign up today for a free two-week
trial of our UN Readiness App.**

www.1spatial.com/us